



Lawrie Park Road, SE26 | £475,000

02087029777

[sydenham@pedderproperty.com](mailto:sydenham@pedderproperty.com)

**pedder**  
We live local





# In General

- Superb 1930's apartment
- Light, bright and spacious accommodation
- Two receptions
- Two double bedrooms
- Shower room
- Excellent condition
- Communal gardens
- No onward chain

# In Detail

An impressive 1930's apartment set within this highly sought after development, Park Court in Sydenham.

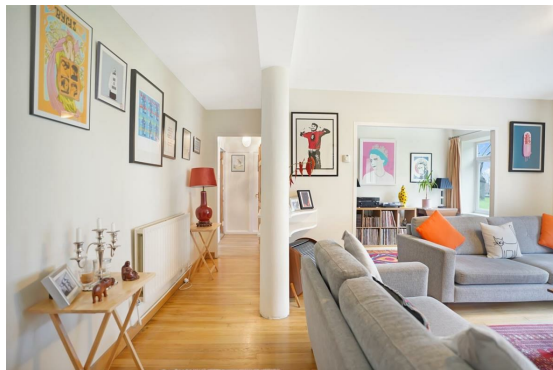
Sandown House forms part of this iconic development built by Cannon and Gibberd who are well known for their advances in architectural designs. Offering stylish lateral accommodation means they offer much more true living space, and were brilliantly built with double floors, to eliminate noise.

Occupying the ground floor the apartment consists of a superb living space, which is wide and bright, large windows amplify the space and frame the beautifully maintained gardens, a dining room provides the perfect space for hosting dinners and parties and could also be used as a third bedroom. There is a U shaped kitchen with parallel work counters, creating a streamlined and practical space where everything is within arm's reach, and a recently refurbished shower room finished in a neutral tiling. There are also two double bedrooms which are peaceful, each benefiting from fitted storage.

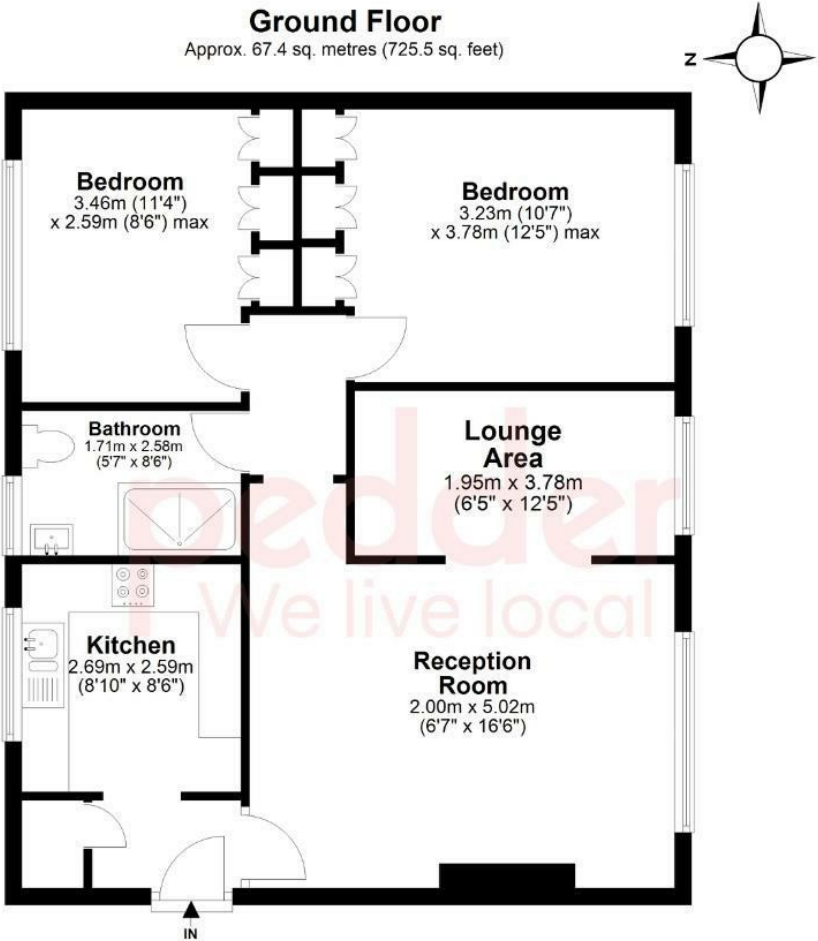
Being enveloped by lush greenery ensures that the reception and primary bedroom benefit from lovely leafy views.

The property sits within easy reach of bars, restaurants and the excellent transport links that this part of South East London is known and loved for including, Penge East (London Victoria), West (Overground) and Sydenham rail.

EPC: D | Council Tax Band: C | Lease: 975 Years remaining | SC: £2549.99pa | GR: TBC | BI: TBC



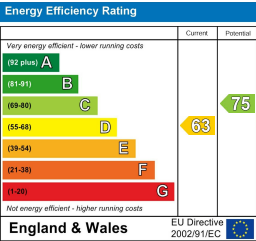
# Floorplan



Total area: approx. 67.4 sq. metres (725.5 sq. feet)

Copyright www.pedderproperty.com 2024. These plans are for representation purposes only as Defined by RICS - Code of Measuring Practice. Not drawn to scale. windows and door measurements are approximate. please check dimensions, shapes and compass bearings before making any decisions reliant upon them.

Plan produced using PlanUp.



Pedder Property Ltd trading as Pedder for themselves and for the vendor/landlord of this property whose agents they are, give notice that (1) these particulars do not constitute any part of an offer or contract, (2) all statements contained within these particulars are made without responsibility on the part of Pedder or the vendor/landlord, (3) whilst made in good faith, none of the statements contained within these particulars are to be relied upon as a statement of representation or fact, (4) any intending purchaser/tenant must satisfy him/herself by inspection or otherwise as to the correctness of each of the statements contained within these particulars, (5) the vendor/landlord does not make or give either Pedder or any person in their employment any authority to make or give representation or warranty whatsoever in relation to this property.